

N 43°-05'-05" W

CURVE TABLE

RADIUS	ARC	NO.	DELTA	RADIUS	ARC	NO.	DELTA	RADIUS	ARC	NO.	DELTA	RADIUS	ARC	NO.	DELTA
275.00'	151.97'	11	72°-13'-32"	125.00'	75.57'	21	19°-06'-00"	475.00'	158.35'	31	11°-59'-16"	350.00'	73.23'	41	415
275.00'	88.02'	12	24°-23'-37"	175.00'	74.51'	22	02°-24'-13"	475.00'	119.93'	32	11°-41'-00"	350.00'	71.37'	42	425
225.00'	159.52'	13	26°-34'-05"	175.00'	84.14'	23	116°-30'-10"	125.00'	254.17'	33	11°-57'-28"	200.00'	41.74'	43	425
225.00'	118.50'	14	50°-57'-42"	175.00'	155.65'	24	60°-58'-40"	150.00'	159.64'	34	25°-43'-20"	200.00'	89.79'	44	855
325.00'	43.85'	15	11°-09'-39"	275.00'	53.57'	25	11°-41'-38"	300.00'	61.23'	35	104°-34'-37"	125.00'	228.15'	45	065
325.00'	84.63'	16	14°-20'-16"	275.00'	68.82'	26	22°-09'-43"	300.00'	126.51'	36	18°-51'-47"	75.00'	50.87'	46	225
200.00'	82.67'	17	22°-14'-54"	425.00'	165.03'	27	09°-55'-57"	425.00'	73.72'	37	41°-20'-10"	75.00'	24.11'	47	295
450.00'	112.81'	18	32°-05'-59"	475.00'	271.64'	28	39°-44'-07"	425.00'	287.32'	38	64°-42'-13"	425.00'	479.95'	48	845
475.00'	74.05'	19	18°-41'-35"	475.00'	154.97'	29	22°-58'-48"	475.00'	170.65'	39	11°-45'-00"	425.00'	87.15'	49	165
475.00'	89.60'	20	24°-30'-13"	475.00'	78.27'	30	04°-48'-00"	425.00'	356.64'	40	30°-51'-36"	250.00'	134.65'	50	765

PAGE COUNTY

seclusion

cross  
creek  
cut

Blevins Rd.

Deer  
Tracks  
Rd

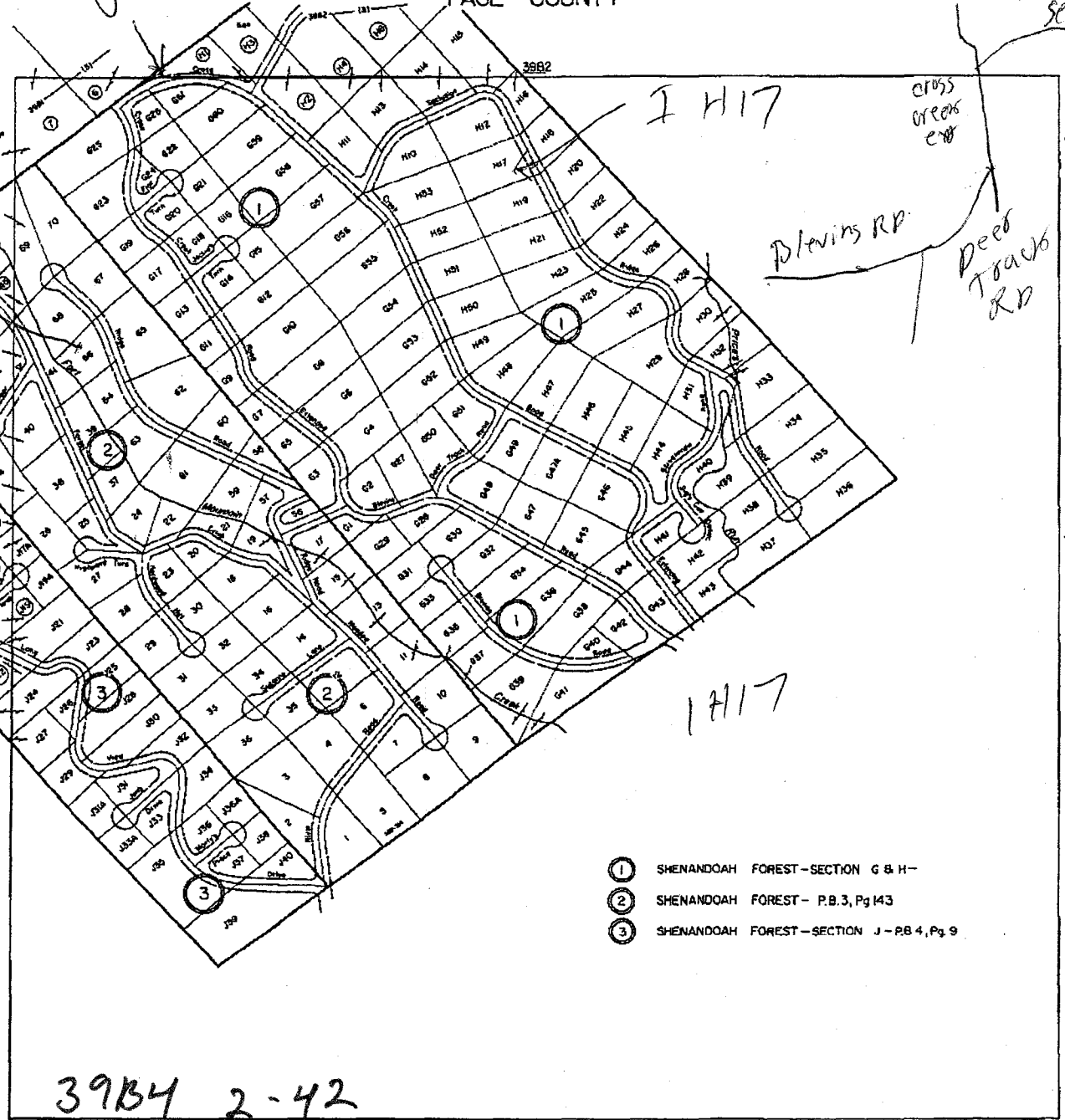
I H17

I H17

2-66  
2-42  
2-43

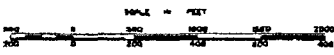
G-61

1983



39B4 2-42

- ① SHENANDOAH FOREST - SECTION G & H-
- ② SHENANDOAH FOREST - P.B. 3, Pg 143
- ③ SHENANDOAH FOREST - SECTION J - P.B. 4, Pg. 9



LURAY DISTRICT

SECTION INSERT 39B4

REVISED:

39B4-1-G61